



TERMINAL ISLANDERS 25TH ANNIVERSARY



1971 - 1996

LOOKING FORWARD

January 7, 1996

It is my distinct pleasure to convey my heartfelt congratulations on the 25th anniversary.

I am deeply honored to have the opportunity to express my respect and appreciation to our membership for making this event possible. I wish to dedicate this important milestone to the memories of the many founders, especially to our first president, the late Bill Nakasaki, for his vision and leadership.

Although our community has changed, the values of the increasingly diverse membership remain the same. The identity of Terminal Islanders still thrives in the cooperative spirit and hard work which have been characteristic of our group.

The lighthouse brochure, a courtesy of Tatsuo Shiojiri, brings back memories of the past but also looks on the future to ensure the perpetuation of our community.

On this special day, I thank the members for making this possible. I am sure that the challenges of the future will be met with the same determination and spirit that have carried us through the past five years ago.

祝



Yujiro Tatsumi
President Terminal Islanders

LOOKING FORWARD

January 7, 1996

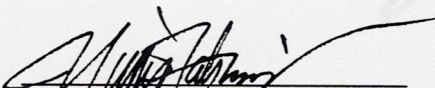
It is my distinct pleasure to convey my heartfelt congratulations on the occasion of our 25th anniversary.

I am deeply honored to have the opportunity to express my respect and admiration to our membership for making this event possible and wish to dedicate this significant milestone to the memories of the many founders, especially to our first president, the late Bill Nakasaki, for his unparalleled dedication to the growth of our organization.

Although nothing remains of the pre-war community except the memories of the increasingly small number of Issei and Nisei, the identity as Terminal Islanders still lingers in the cooperative spirit and dedication which have become so characteristic of our club.

The lighthouse on the cover of this brochure {photo, courtesy of Tatsuo Shioji} not only brings back memories of the past, but also directs us to focus on the future to ensure the perpetuation of our organization.

On this memorable occasion, I wish to thank the membership for making this event possible. May the flame we lit twenty five years ago burn ever brighter in the years to come.



Yukio Tatsumi
President Terminal Islanders

WHAT IS A TERMINAL ISLANDER?

January 7, 1996

LOOKING BACK

JANUARY &, 1996

Congratulations on the Terminal Islanders' 25th Anniversary.

I join the 500 plus members on this happy and memorable occasion and pray that the next 25 years will be as productive.

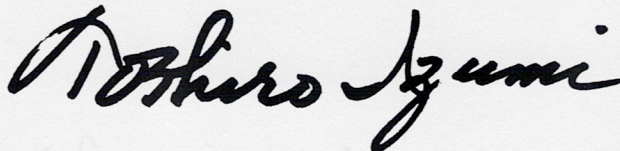
Our special thanks to Mr. Iwao Shirokawa, Mr. Masaaki Kuwabara, Mr. Noritatsu Nakai, the first elected President Bill Nakasaki and our present President Yukio Tatsumi, who were the nucleus in the formation of our organization. There were many others, too numerous to name, who were also involved.

Physically our prewar home site doesn't exist anymore, but the memories remain vivid. It was a wonderfully relaxed place with everyone associating as one big family. This spirit and relationship has been manifested through the substantial donation to the Keiro Retirement Home, and again the 1/4 million dollar plus donations for the establishment of the 2nd phase of the Japanese American National Museum.

To the departed relatives and friends and to the remaining friends, many "THANK YOU", for the numerous wonderful experiences and memories of day past.

Toshiro Izumi

Vice Pres. Terminal Islanders



Masaharu Taniguchi

Vice Pres. Terminal Islanders

WHAT IS A TERMINAL ISLANDER?

January 7, 1996

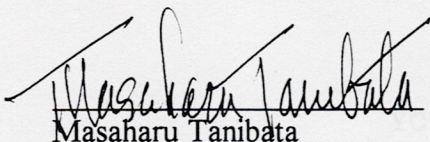
Terminal Islander is a part of a place, it is a part of the mind, it is a part of the heart, it is a part of a spirit, it is a part of a tradition, a part of growing up together, in other words it is not explainable as a definite object that one could put a finger on.

I can only explain it as "that something" that dwells in each one of us. It can only be seen as a result of something that has happened. Like the wind you cannot see it but you see the result of it. For instance like;

The late Fred Shirokawa's organizational spirit.
The late Bill Nakasaki's reservedness always saying suman-kedo yatte kurenka?
Yukio Tatsumi's leadership in whatever we undertake.
The late Mrs. Mio's always doing things for other people.
Tosh Izumi's foresight in whatever that is planned.
The late Masaaki Kuwabara's donating spirit.
The late Kay Kato's forcefulness in getting things done.
Tom Hamasaki's determined stubbornness and stick-to-itness.
Charley Hamasaki's open candidness.
Mitzie Nakai's unselfish compassion for service.
Kisaye Sato's hospitable kindness, always positive.
but above all, Mrs. Marumoto's softness and understanding

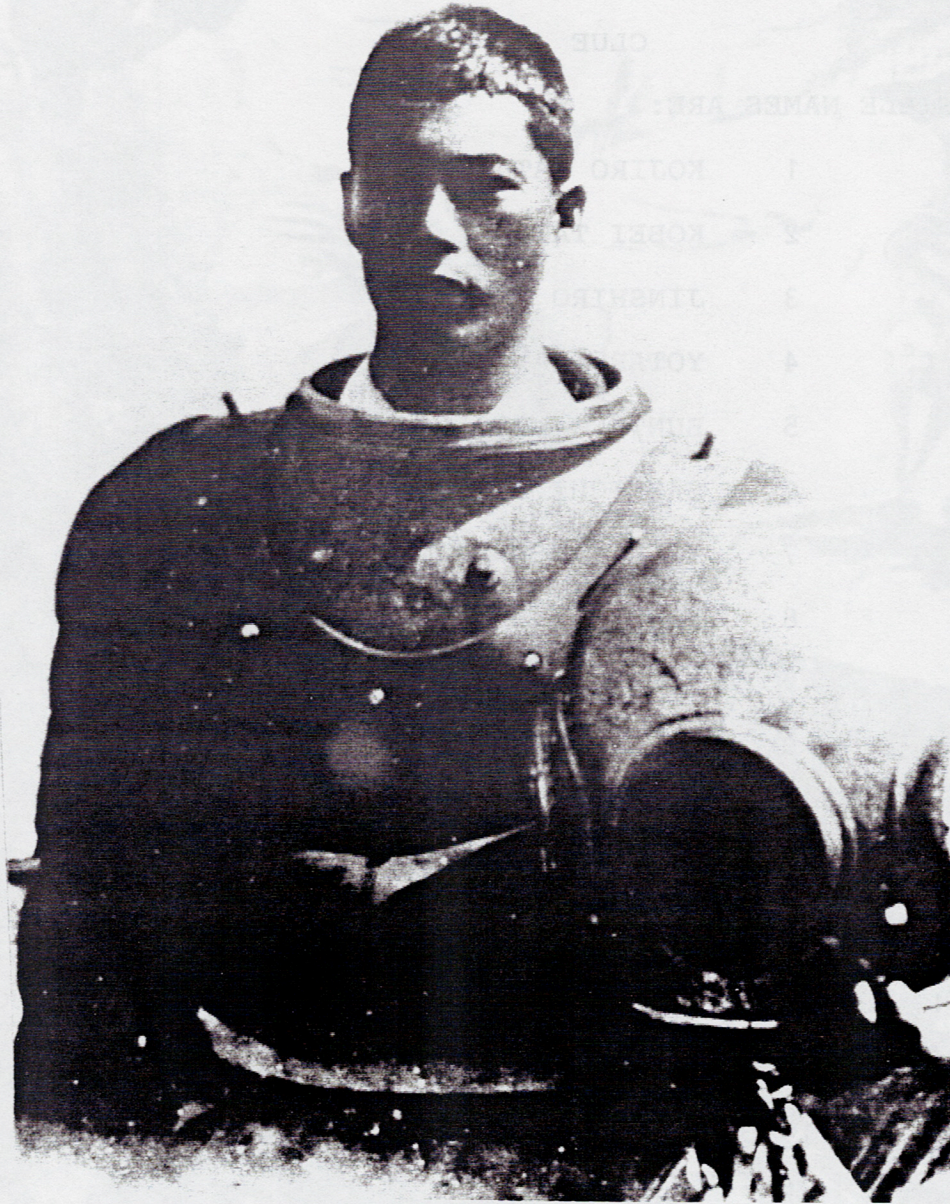
This is "THAT SOMETHING"

All this would not be possible if it weren't for all the Terminal Islanders. And the binding chemistry that holds us together is the distinct fragrant odor of Terminal Island, though the smell may have become faint and gone, nevertheless it is there in essence, surrounding us with that peculiar sense of oneness.



Masaharu Tanibata

Vice Pres. Terminal Islanders



YOUNG MR. KOBEI TATSUMI 1900

A PROBLEM FOR EVERYONE

PLEASE HELP US IDENTIFY THE EARLY PIONEERS, WHO STARTED THE ABALONE INDUSTRY AT WHITE POINT, SAN PEDRO IN THE EARLY 1900.

CLUE

THE POSSIBLE NAMES ARE:

- 1 KOJIRO HATASHITA
- 2 KOBEI TATSUMI
- 3 JINSHIRO TANI
- 4 YOTARO HATASHITA
- 5 BUNTARO URAGAMI
- 6 SANKICHI HATASHITA
- 7 YOSHIMATSU KOJI
- 8 YOSHIMATSU HANAMURA
- 9 KICHIROBEI RYONO
- 10 TAKESHIRO HIGASHI
- 11 UKICHI KOBATA
- 12 SEKO

ABOVE 12 NAMES ARE FROM MR. KANICHI KAWASAKI'S MANUSCRIPT.

FOLLOWING ARE 3 MORE NAMES ACCORDING TO MR. KOSUKE TAKEUCHI.

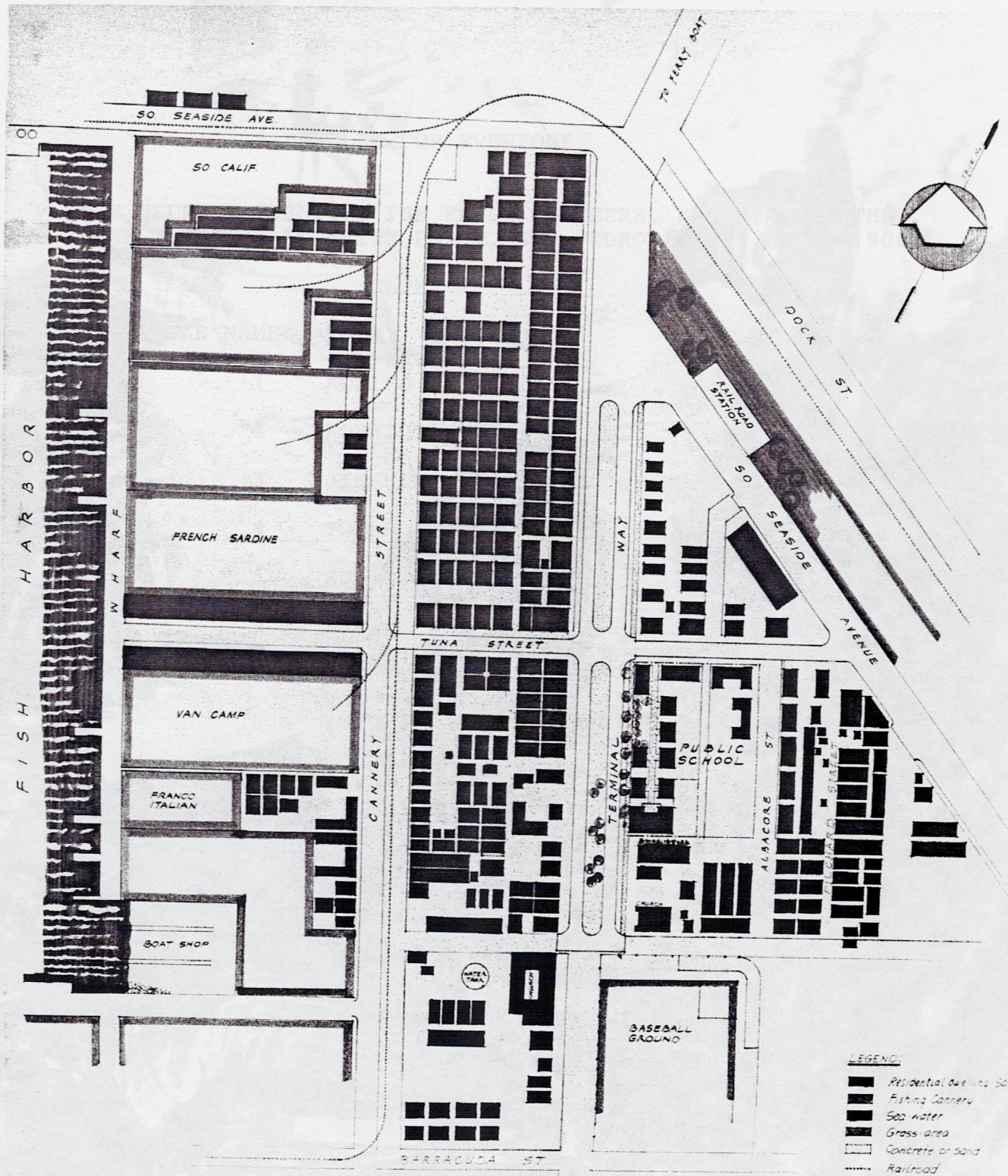
- 13 RYOJIRO HATASHITA
- 14 KITSU
- 15 MORI

IF YOU CAN NAME ANYONE, PLEASE CONTACT THE TERMINAL ISLAND CLUB.

THANK YOU.



DESIGNED BY TOM HAMABAKI

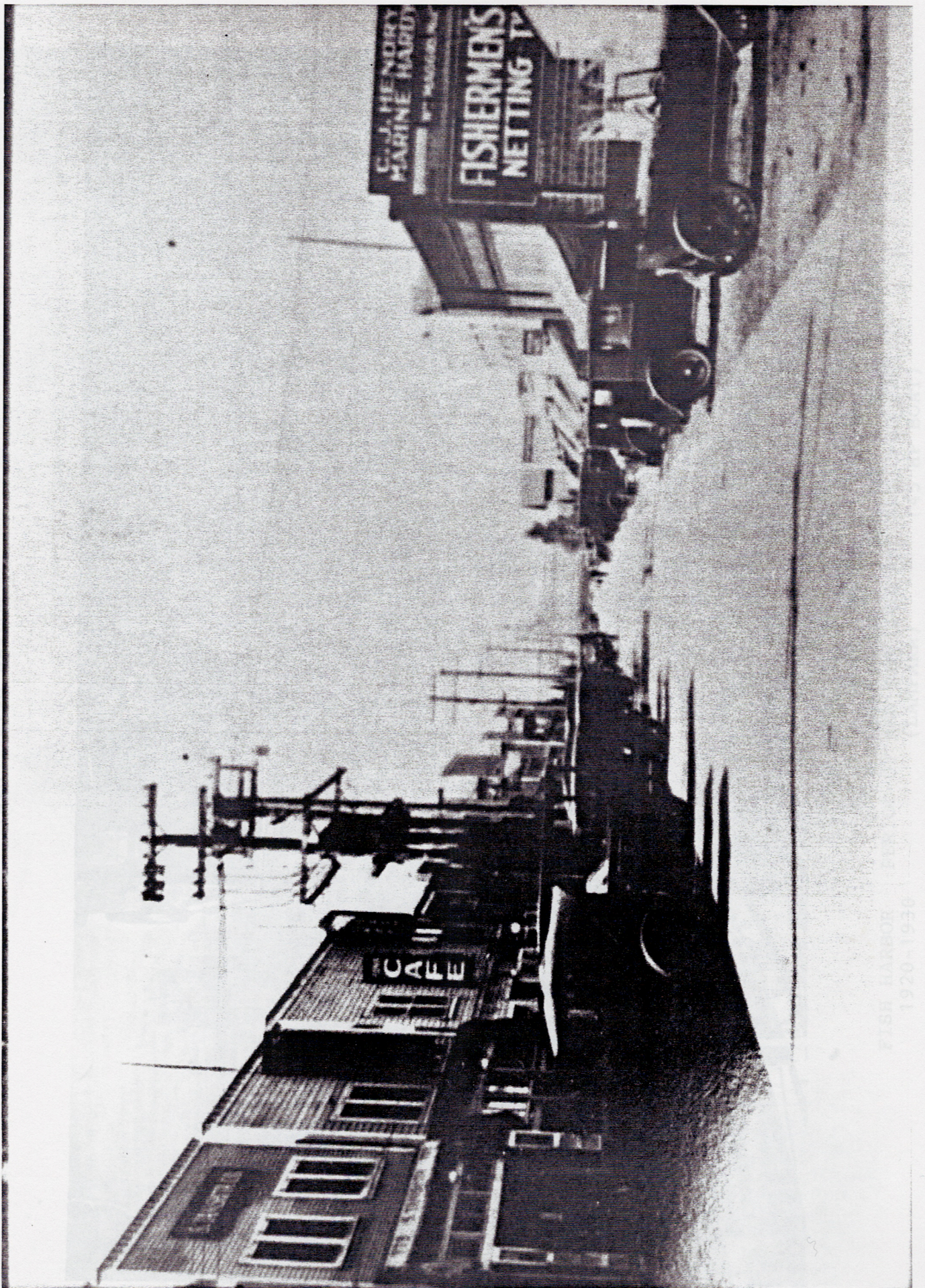


Japanese Fishing Village at Terminal Island

ターミナル・アイランド 日本人漁村
Approximate 1936

- LEGEND:**
- Residential Buildings
 - ▨ Fishing Cannery
 - Sea water
 - Grass area
 - Concrete or sand
 - Railroad

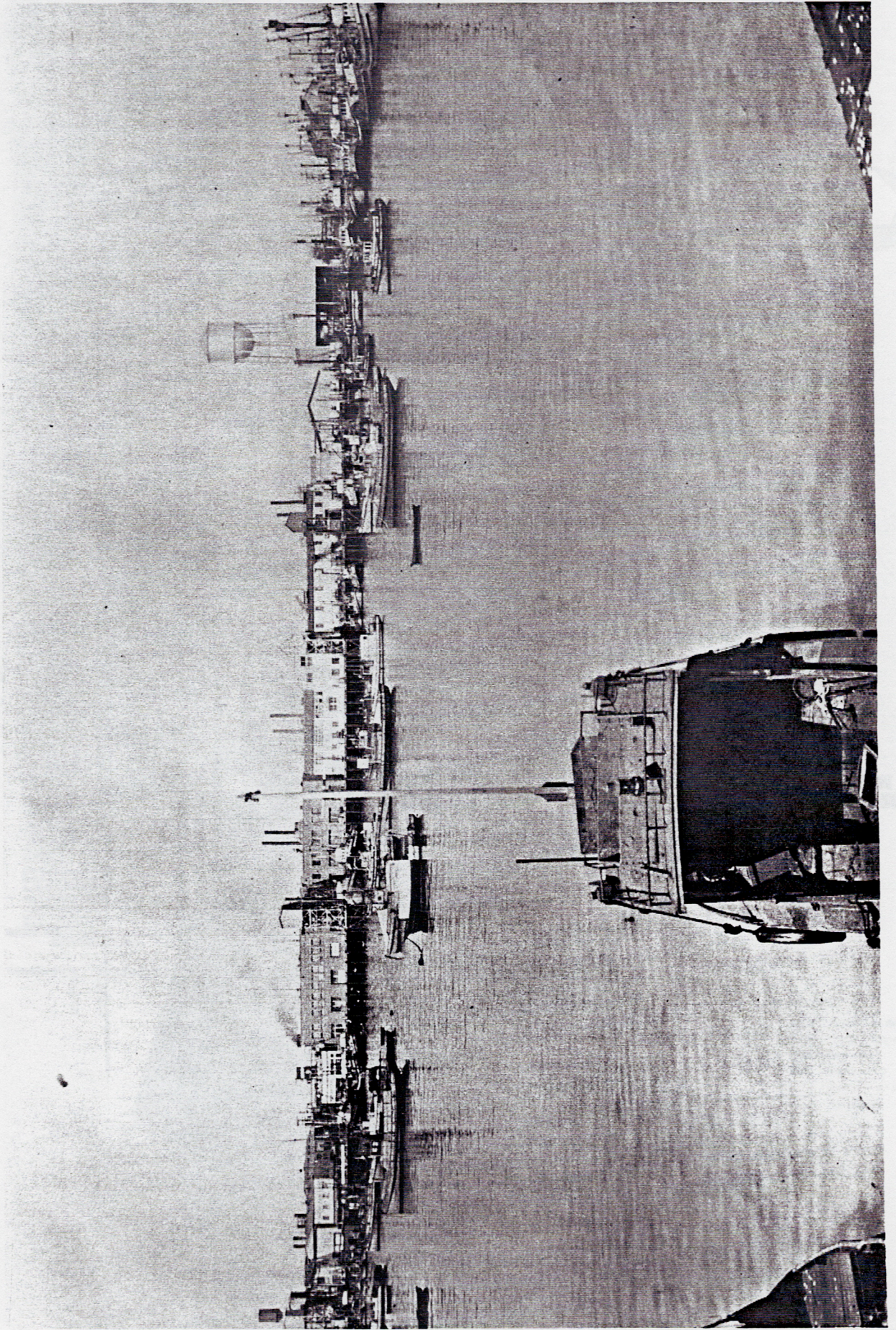
Displayed by Tom Hamasaki



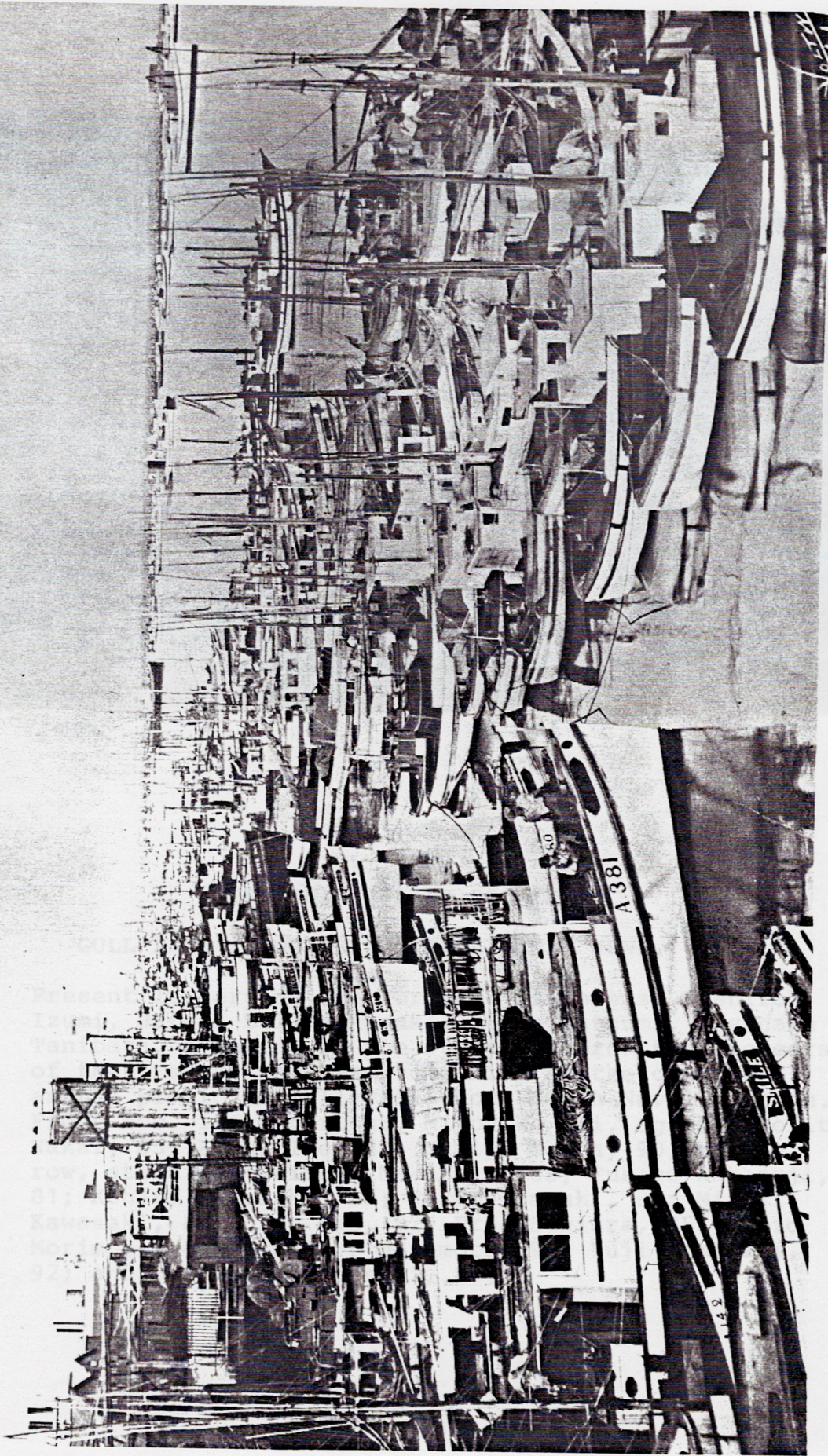
FISH HARBOR, ALASKA
1920-1930

FACING NORTH ON TUNA STREET 1930

LYCLING HOULIH ON JONY BAKERY 1070



1930 FISH HARBOR



FISH HARBOR PERIOD OF KEN KEN BUNE AND SHIJU-GO BARIKI
1920-1930 (LAMPARA) (45 HP BOAT)



TERMINAL ISLAND PIONEERS

GULL PARK LONG BEACH NAVAL BASE JUNE, 1992

Present leaders of the Terminal Islanders, Toshiro Izumi, Harumi Bill Nakasaki, Yukio Tatsumi, Masaharu Tanibata, standing on the stage, honored the pioneers of the pre-war Japanese community at the group's annual picnic at Gull Park, Long Beach Naval Station. Front row, left to right, Miyohiko Kai, age 86; Noritatsu Nakai, 85; Aichi Ige, 86; Namiyo Genda, 90; middle row, standing, Seiichi Nakasuji, 88; Fusaye Nakasuji, 81; Koharu Yamasaki, 85; Wakae Iwasaki, 88; Miyoji Kawasaki, 87; Orie Mio, 92; Fred Sugiura, 86; Yukio Morimoto, 89; Tomitaro Marumoto, 92; Yuji Yamasaki, 92; and Yasukichi Koyanagi, 83.



FRED ISAMU WADA

FRONT AND CENTER. This is where Mr. Fred Isamu Wada has been permanently positioned by the different cultural organizations, both nationally and internationally.

The elite International Olympic Group has accorded him with much gratitude and accolade. Fred Wada first became involved with Olympic in 1932 and as of that period, has been the moving force of this prestigious Olympic society. The most recent notable project has been the tremendous undertaking of the Keiro project. Success came with super human effort and sacrifice on his part and that of his partner, George Aratani. This mighty accomplishment will remain as a great legacy in the historical annals of the Nikkei world.

Let us not forget, Mrs. Masako Wada. Mr. Fred Wada will be the first person to shout, in Fred's famous style, "Hell! I couldn't have done all this without my wife"! Behind a very great man, is a great person, his woman. Mrs. Wada's part in her husband's RCA TV business venture with Japan and Mr. Ko Misu of Kawasaki, Japan teaches us a lesson in patience and the importance of spousal support. There is a sign at downtown Keiro that reads: Mr. Ko Misu, Japan, 1969. First Million Yen Donation to Keiro Nursing Home. Some of us know that in spite of Mr. and Mrs. Wada's reticence, that particular room is the result of their unselfish and philanthropic end-around play.

This evening the Terminal Islanders Club, once again, wishes to honor and acclaim Mr. and Mrs. Fred Wada as our emeritus members. They are our own Terminal Islanders. And loud and clear, no else can claim them!

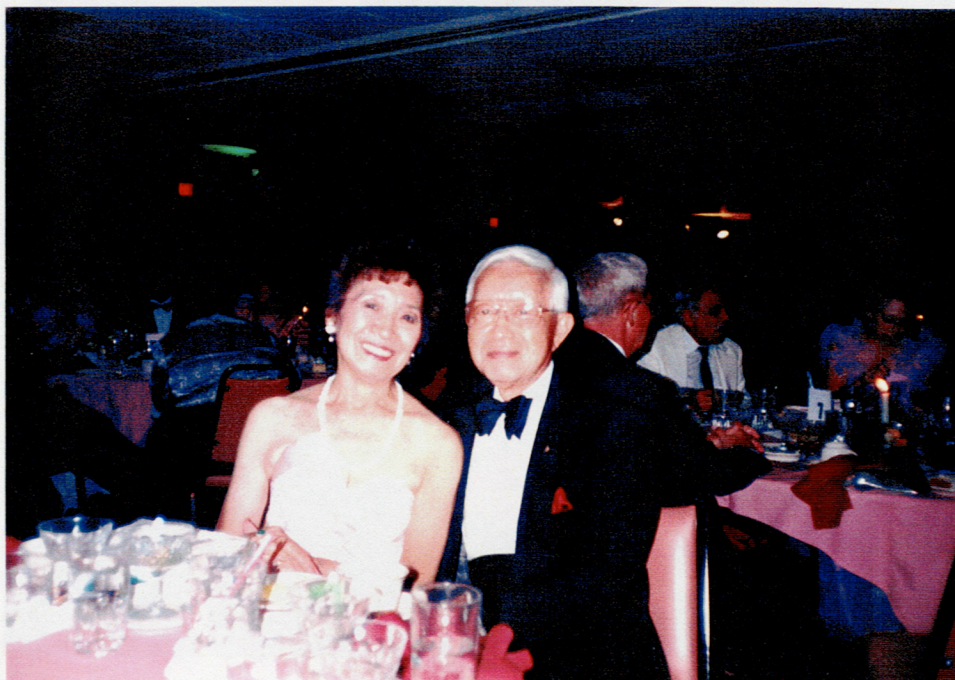


FRED IWAO SHIROKAWA

I studied the message that Mas Tanibata wrote in this booklet. He listed Fred Shirokawa first in his choice of prominent Terminal Islanders. Quote, "Fred Shirokawa for his organizational skill". Great.

Various sources have informed me as to how the Terminal Islanders Club was organized. Fred Shirokawa was always mentioned as to have been the driving force behind the scene. He formed a nucleus of supporting friends and with skillful diplomacy, helped formed the Club. I have enjoyed many friendly poker sessions with him, at Santa Cruz St. in San Pedro. During a card session, one can easily learn a thing, or two about the character of a person. I learned that Shirokawa-san was a very humble person.

Tonight, the 25th Anniversary of the Terminal Islanders Club, would have been a scenario of crowning glory for him.



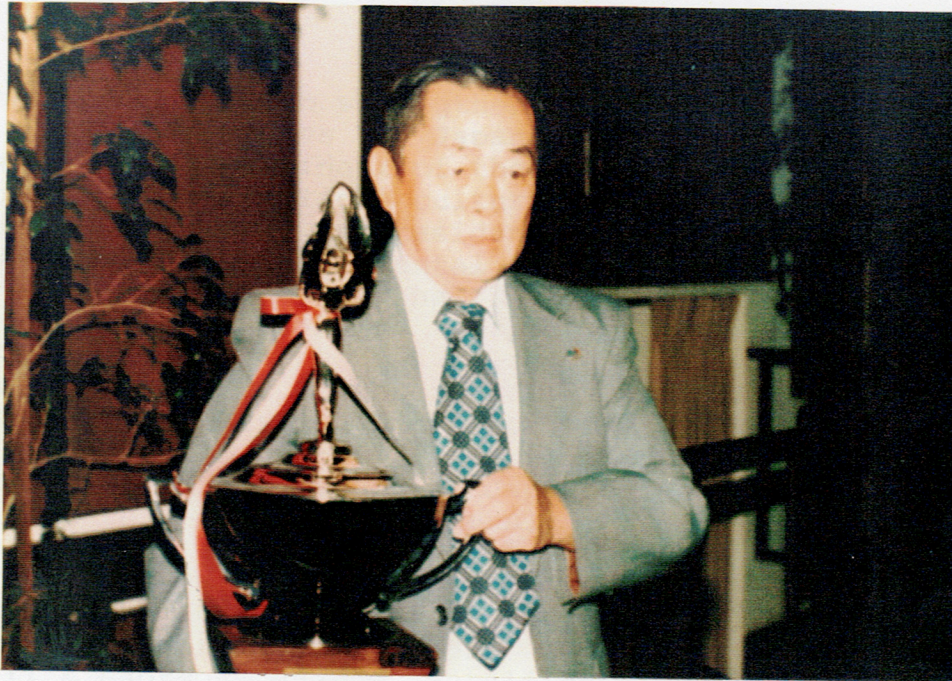
MR. AND MRS. S. JOHN NITTA

Founder of the American Chick Sexing School, S. John Nitta. The title indicates an impressive personality. Upon reading the latest book, Terminal Island: An Island In Time, a collection of the personal histories of some of the Islanders, I read about John Nitta. A very interesting story of a capable young man, very aggressive, caring and gifted with an imaginative business acumen. For such a person, the opportunity to reach the epitome of financial success was there. He knew it and he grabbed it.

As a teenager, I remembered him as a SPSHS varsity tennis player. His younger brother, Isamu, often was in the company of our family friend, Yutaka Yoshimoto, brother, John Michio and other Seinen Kai group.

While in Philadelphia and later after returning to Southern California, I often heard about John Nitta of Lansdale, Pa. from my East Coast friends. I always made certain that they knew that he was an Islander. With his business established locally and spreading successfully to Europe and to the Asian countries, he focused his energy towards the philanthropic area. As in his business ventures, he successfully contributed towards the well being of different civil groups.

Now retired in Florida, he is leading a relaxing life. He has earned that privilege and John, we are proud of you.



WILLIAM HARUMI NAKASAKI

This year being our silver anniversary, it is more than appropriate to pause for a moment and pay a tribute to Bill, our first president of the Terminal Island Club.

Bill was gifted with an innate ability to develop and operate positive relationship among different people and organization. He expanded his expertise by attacking the problem of bettering the international workings between United States and Japan in his own manner. For sure, his success of fore mentioned endeavor was motivated by his fundamental conviction of human compassion.

EXCERPT

Bill's goal was to develop goodwill and friendship between Japan and the United States. He accomplished this in many ways:

. He sponsored 19 exchange students from Japan and helped them better understand American culture and values.

. In 1976, he established the International Goodwill and Friendship Baseball Tournament involving boys from 12 to 16 years old and was the Executive Director for 16 years.

. He was also instrumental in promoting the annual college baseball series with Japan which spanned a period of 19 years. The United States Baseball Federation recognized Bill for his continued support with an International Baseball Service Award.

. Bill was a firm believer in the Olympic Baseball movement. In 1984, he was an active member of the U. S. Olympic Baseball Organizing Committee and in 1988, his efforts culminated into baseball becoming an official Olympic sport.

Bill also worked hard to strengthen cultural and religious ties between the United States and Japan.

. He was the first president of the Terminal Islanders who help to promote Japanese-American culture within Southern California and Japan. He continued as president of the Terminal Islanders for 13 years. He was instrumental in the production of the film, "A Time Remembered. The Terminal Island Story"..

. Bill had the honor of being the president of the Wakayama Kenjin-Kai for two years.

. He was also a former director and a member of the Montebello-Ashiya Sister City Association since 1971.

. Since its inception about 15 years ago, Bill was a member of the Board of Directors of the Japanese Retirement Home, a valued asset to the Japanese community.

. Bill was on the advisory board of Union Bank of Montebello for over twenty years.

. He was also an active member of the Sozenji Buddhist Temple and served as Chairman since 1989.

. For Bill's enormous energy, unselfish devotion, and positive contributions to his community, he received proclamation from the cities of Montebello and Monterey Park. He also received a Congressional Award from Matthew Martinez, representing the 30th District of California.

For all of Bill's accomplishment towards strengthening relations between Japan and the United States, he was the first American citizen recognized by the State of Wakayama with a Prefectural Distinguished Service Award in 1990. On November 3rd of this year, he was honored by the Japanese Government with the sixth Order of the Rising Sun. Accompanying this distinguished medal, was a proclamation signed by the current Prime Minister of Japan, Kiichi Miyazawa, and was invited to visit the Emperor of Japan.

Above excerpt, courtesy of Bill's sister, Mrs. Kisaye Nakasaki Sato.

TAMIKAZU TOM HAMASAKI



TAMIKAZU TOM HAMASAKI

THE OUTLINE OF THE TERMINAL ISLANDERS

Terminal Island is located at the mouth of the Los Angeles Harbor, directly across the channel from the city of San Pedro. 33 miles south of the City of Los Angeles, California.

In 1971, The Terminal Islanders held a reunion party at Golden Palace Restaurant in China Town at Los Angeles. Although scattered throughout the country, people came to this party from Chicago, Illinois and Seabrook, New Jersey. There were about 900 people at this reunion.

Few months later, the Terminal Islanders Club was organized by the former residents of this fishing village. This now extinct fishing village was once very active in the social structure of the Japanese community in Los Angeles. Following are some of the more active organizations: Southern California Fishermen Association, Japanese Association (Nihon Jin-Kai), Japanese Business Organization, JACL, Teen-ager and Kibei Nisei Young Men's Association, Japanese and Nisei Ladies Society, Son-jin Kai, Boys Scout, Japanese Language Schools and all religious church groups.

We, as former residents of Terminal Island, are proud of this fishing village, which existed from the year 1914 to 1942. With the beginning of World War II between Japan and United States, we lost our notable birth place. It was a mortal blow to the Isseis and the Niseis, who had a promising future there, to evacuate within 48 hours notice and later on 24 hours due to the order of the U. S. Military Government. We spent the duration of the war at the so called relocation centers.

At the end of the war, we were able to return to the West Coast to resume our normal livelihood. We worked and studied hard.

Today, Terminal Islanders consists of Physicians and Surgeons, Attorneys, Dentists, Pharmacists, Architects, Artists, Engineers, Machinists, Mechanics, Businessmen, Technicians, Nurses, Gardeners and some are still continuing the fishing industry, etc.

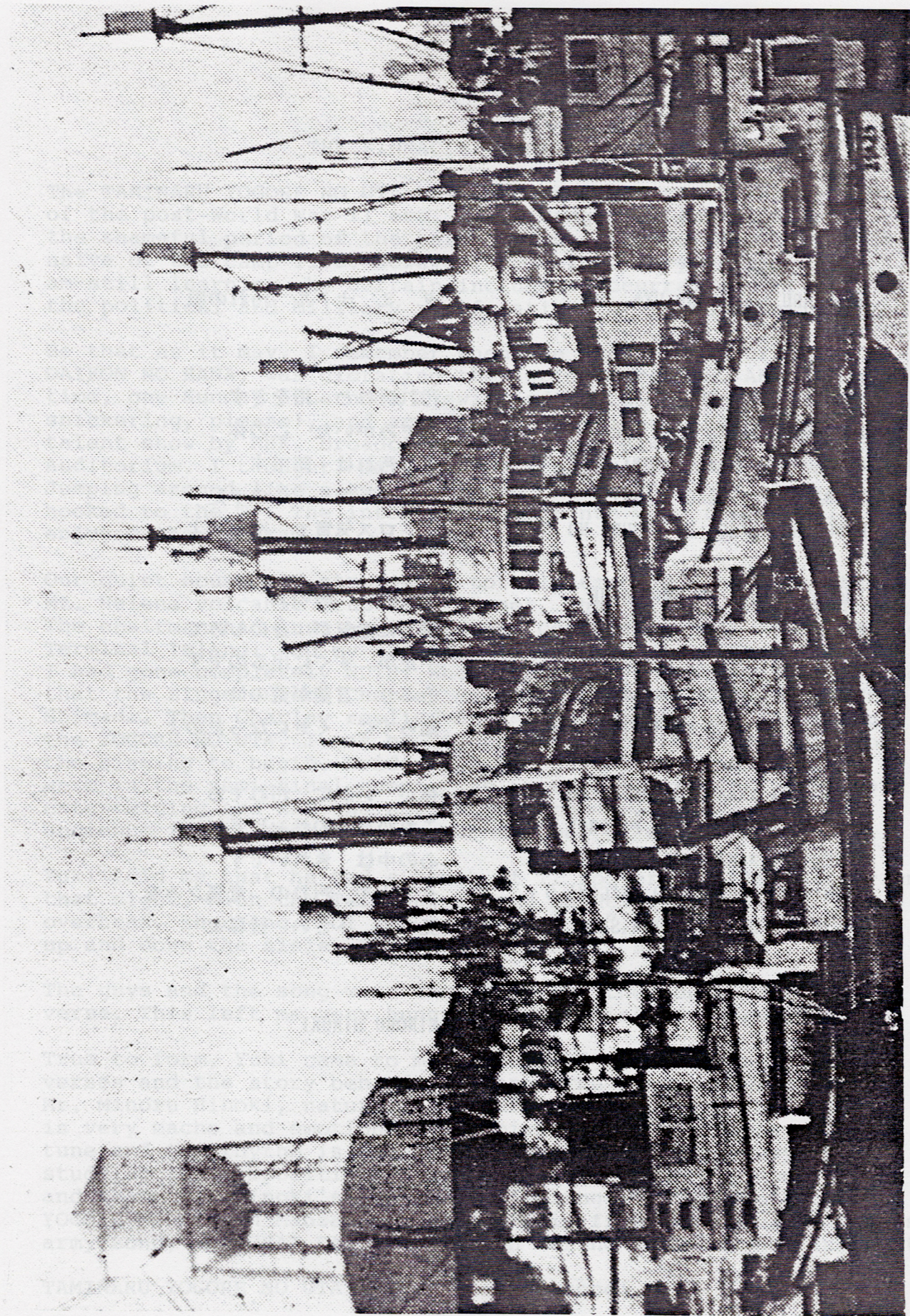
We, Terminal Islanders, came back strong like our beloved pioneers, who arrived in this country, without the knowledge of the language and the culture of the United States. In comparison, the early pioneers fought and overcame much more of an obstacle than ours. The evacuation and subsequent detention in relocation centers must be one of the dark side of the history

of the United States.

We came back and made a virtue of necessity and returned to normalcy within few years. This is the "Terminal Islanders".

And many thanks to the fellow Terminal Islanders, who made this project possible.

The Terminal Islanders
Projector, Historian
Presented by,
Tamikazu Tom Hamasaki



EAST BASIN FISH HARBOR 1930

TAMINARU YOGORE NO UTA

YOGORE YOGORE TO YUBI O SASU
SHIO DE MIGAITA KONO KARADA
KUROKU YOGORE WA HOKORI DESU
UTEBA HIBIKU KONO TEASHI
MADOROSU KATAGI DE SUSUMU NO YO

INOCHI O MATO NI UMI NO UE
KITAETA IKI GA MI NI SHIMITE
TEASHI GA SUGU NI DERUNO DESU
SOBURI KOTOBA GA ARAI NO WA
SHIRAZU NI KUSE NI NATTA NO YO

KARADA GA IKANI YOGORE DE MO
KOREGA JIMAN NO "SAN PIDORO"
KOKORO NO NAKA WA KIREI DESU
"TAMINARU YOGORE" NO IKIGOMI O
MI TE TE KUDASAI MINA SAMA YO

タミナル 汚れの唄

汚れ汚れと 指をさす
潮でみがいた この体
黒く汚れは 誇です
打てば 響く この手足
マドロス気質で 進むのよ

命を的に 海の上
鍛えた意気が 身にしみて
手足が すぐに出るのです
そぶり 言葉が荒のは
知らずに くせになったのよ

体が いかに 汚れでも
これが自慢のサンビドロ
心の中は きれいです
タミナル 汚れの 意気之みを
見てて 下さい 皆様よ

MINORU HINOKI

THE PINNACLE AT SANTA MONICA

The TAMINARU YOGORE NO UTA has intrigued me, since the beginning of the post-World War II era. Not having been incarcerated during the shameful period of the barbed wire camps, I have been very naive of the camp life. However, I learned very quickly and am still learning why certain incidents occurred and of all the political and military ramifications of the evacuation.

Be that as it may, I remember when the Japanese TV program, DAIKON NO HANA, was dictating the social schedule. About that time, one Sunday afternoon I switched on the "Idiot Box", (no snickering, please), and accidentally tuned into the Japanese talent show by NHK, broadcasting from the Santa Monica Civic Auditorium. I thought, maybe, the program should be taped. Jumping around like a swivel hipped tailback, I got the recorder hooked to the TV. The interesting segments were taped as I enjoyed the program.

Our quiet household atmosphere totally erupted. Just like the Mt. Helena volcanic eruption, if not, that of Mt. Vesuvius! The chairman had just announced the contesting team representing Terminal Island! And my family, usually very laid back, thought I had gone completely NUTS! When the interview started, I learned that the singers were Charley Hamasaki, "Tiger" Iriye and Peter Shimada. Then Charley replied that the team was going to sing the YOGORE NO UTA, I was on "Cloud Nine" and couldn't wait for the singing to begin. Evidently, the guys had qualified and were in the semi-final event. The interview, itself, was very entertaining and had the entire NHK crew from Tokyo and the audience in a tremendous, crescendo roar of approval.

Yuki told me that he had a bunch of TI rooters at the auditorium that night. With the Terminal Island banner waving madly overhead, shouting, "Oi You-ra GAMBARE Yo", as they marched up and down the aisle. What a show! What a spirit!

The guys and the song were terrific, but they only sang one verse. This left me very hungry and unsatisfied. More! More!

True to form, Yuki came to my rescue and furnished all of the verses and the story behind the song. The song was written by Mr. Minoru Hinoki, naturally, a Terminal Islander. The lyric is very macho and emotionally inspiring. The music has a catchy tune and the rhythm is such as to make the singing easy. Upon studying the composition, one will be able to truly comprehend and share Mr. Hinoki's passionate feelings, as he wrote the YOGORE NO UTA in Manzanar. The music is from the popular Japanese army song, SHANGHAI DAYORI, written during the Shanghai incident.

TAMINARU YOGORE NO UTA is one helluva song!

Terminal Islanders

Dear Friends:

It has long been a Beautiful Dream for the "Terminal Islanders" to have a re-union once again in a family like atmosphere.

It is our real pleasure to be able to announce that we are going to have a get-together.

at THE GOLDEN PALACE (New Chinatown)
913 NO. BROADWAY, LOS ANGELES
on SUNDAY, JUNE 6th, 1971 — 5:00 P.M.

We are eagerly looking forward to seeing you all. In order to reserve the place, we must know how many guests will attend. Please kindly return the slip before May 23rd.

Sincerely,

TERMINAL ISLANDERS' ORGANIZING COMMITTEE

御案内

長い間の夢...ターミナル島人の親睦会が愈々左の通り実現する事になりました。

皆様元氣を出してバリ／＼御出席下さいます様お願い致します。

時・一九七一年六月六日(日)
午後五時

場所・ゴールデンパレス

913 NO. BROADWAY

(New China Town - Los Angeles)

宴会費・大人五弗

小供三弗

会費・一家族につき年五弗

膳部の都合上、誠にすみませんが御出席の有無を下記の用紙に書入れて五月二十三日までに御送り下さいませ。

発起人一同

(切取線)

出席します Will Attend

(住所姓名)

出席人数 No. of Persons.....

出席できません Will Not Attend

Name.....

Dinner—Adults\$5.00

ADDRESS.....

Children\$3.00

Zip

Yearly Membership Fee\$5.00
(per family)

Telephone.....

THE BEGINNING

25 years ago, 23 Terminal Islanders got together and charted an organization, which was destined to become one of the leading Nikkei group. Unfortunately, no recording secretary was appointed, so consequently, there is no way of accounting for the minutes of the meeting. However, the following 20 names have been verified, and sad to say, the remaining 3 names can not be listed. The name, Terminal Islanders Club, was chosen. Each charter member made a monetary donation and the new club, with a total fund of \$230.00, was started.

Little did the 23 charter members believed that they had initiated an organization, which with much vigor and team-work, would accomplish so much for the benefit of the Nikkei community. At the same time, this strong group was taking care of their own. The spectacular deed of last year in connection with the Terminal Island exhibit and the Phase II program of the Japanese American National Museum can easily attest to the strength of the Terminal Islanders Club. The old spirit of YATTA (old fishing vernacular of the pre-war Terminal Islander fishermen meaning, "Get the ball rolling"), still prevails.

Also, much credit must go to the leaders and the older counselors for their wise guidance. For sure, they were very confident that their decisions would be supported, without reservation, by the entire membership. The membership, in return, with confidence in their leaders, contributed whole heartedly, resulting in a very smooth team-work. This combination is what made the various undertakings so successful.

Tonight, we all say, "Thank You", to each and all charter members as we reap the harvest of their unselfish and wise decision made on May 27th and 28th of the year 1971.

1	Fred Shirokawa	14	Miyagishima
2	Gunji Tonai	15	Iwasaki
3	Masaaki Kuwabara	16	Kiyoshi Kadonaga
4	Katsusuke Hamachi	17	Eizo Yutani
5	Ogawa	18	Tamikazu Hamasaki
6	Jiro Takahashi	19	Kei Kato
7	Bill Nakasaki	20	Yukio Tatsumi
8	Kisaye Sato	21	Unknown
9	Sonoko Katsuyama	22	Unknown
10	Nori Hiromoto	23	Unknown
11	George Yamasaki		
12	Michio Ryono		
13	Sakuichi Takade		

Terminal Islanders
INAUGURAL BANQUET
GOLDEN PALACE RESTAURANT, LOS ANGELES

JUNE 6, 1971

ATTENDING FORMER TEACHERS WERE HONORED:

1. DR. BURTON E. DAVIS
2. MISS KATHERINE CHAN
3. MRS. BETTY FRIGON BUCKMASTER
4. MRS. VIRGINIA GOAD FULK
5. MRS. HELEN PARKINSON ROBINSON
6. MRS. KAY WASSERBARGER
7. MISS NELL MARTIN
8. MRS. EVA OVERSTREET
9. REV. K. SHIRAIISHI
10. MRS. SHIRAIISHI
- !! REV. KICHITARO YAMAMOTO
12. MRS. VIRGINIA SWANSON YAMAMOTO
13. FUMIYO IKEDA
14. MRS. SHIGEMI MOCHIZUKI
15. PAMELA MURAKAMI
16. MR. TADAO KOBATA

ATTENDANCE WAS OVER 700.

THE MEMBERS OF THE TERMINAL ISLANDERS CLUB EXPRESSED THEIR SINCERE GRATITUDE TO THEIR MOST BELOVED MENTORS. AND A VERY NOSTALGIC TIME WAS SPENT BY ALL. SHARING TOGETHER THE MANY EXPERIENCES WITH THEIR BELOVED "SENSEIS" WAS AN ABSOLUTE CREDIT TO ALL .

Dinner—Adults \$5.00
Children \$3.00
Yearly Membership Fee \$8.00
(per family)



CHAIRWOMAN MRS. IKU Y. KANAI



DR. FRED FUJIKAWA DIPLOMATIC AS USUAL

TERMINAL ISLANDERS CLUB FIRST KANPAI



MR. KATSUSUKE HAMACHI

MISAKI KUMABARA GEORGE TAMURA MARI KAWAI RILE
SEKASUJI YUKIO TAMACHI ICHI YASHIMOTO SOHICHI YUJAI
MR. FRED SUZUKA MRS. ICHI YASHIMOTO MRS. NORI KAWAI
MR. HISAYO N. DATO MRS. KANERO I. YAMAMOTO MRS. ELYON SUGA



"MAKU" DONATED BY GOVERNOR KARIYA OF WAKAYAMA KEN
 MASAOKI KUWABARA TOSHIRO IZUMI BILL NAKASAKI YUKIO
 TATSUMI TAMIKAZU HAMASAKI MAS TANIBATA GEORGE
 YAMASAKI BOB URAGAMI AUGUST 17, 1985



MASAOKI KUWABARA GEORGE YAMASAKI NORI NAKAI BILL
 NAKASAKI YUKIO TATSUMI ICHI HASHIMOTO TOSHIRO IZUMI
 MRS. FRED SUGIURA MRS. ICHI HASHIMOTO MRS. NORI NAKAI
 MRS. KISAYE N. SATO MRS. KANEKO I. NAKANISHI MRS. KIYOE GENDA



BILL NAKASAKI YUKIO TATSUMI



THE PRESENTATION FOR HIS 13 YEARS OF PRESIDENCY

JANUARY 1984

YUKIO TATSUMI MAS TANIBATA BILL NAKASAKI



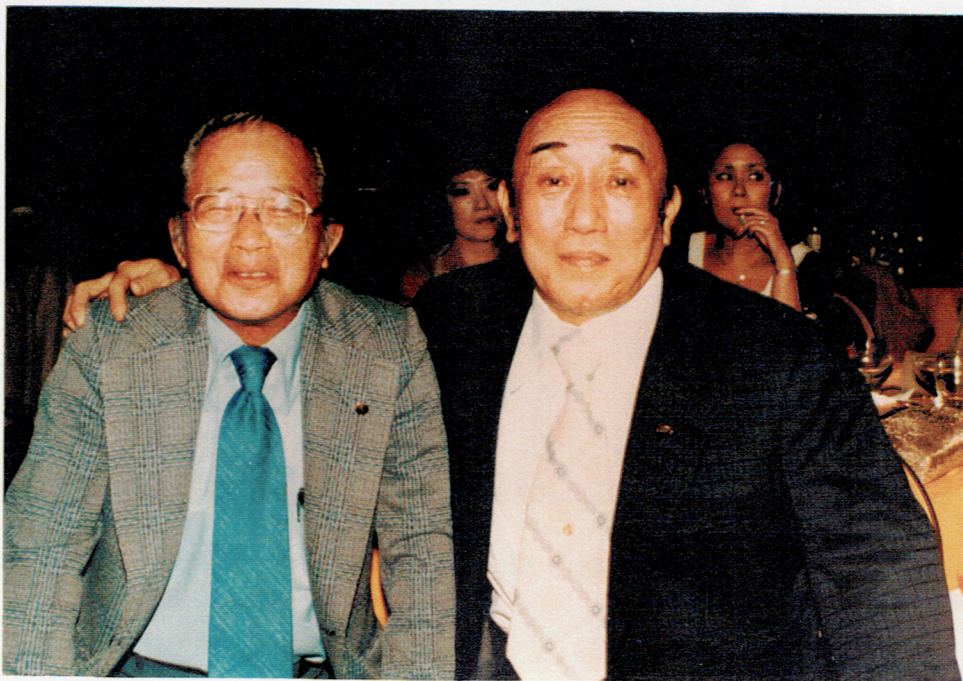
MT. RUSHMORE KIYOKO AND TOSHIRO IZUMI MASAKO WADA
BILL NAKASAKI FUMIKO NISHIMURA



1992 TERMINAL ISLANDERS AT MT. RUSHMORE NATIONAL PARK



MAS TANIBATA YUKIO TATSUMI BILL NAKASAKI



FRED IWAO SHIROKAWA BEN KISHI (from Japan)



IWAO HARA AND HIS FAMILY



MRS. ORIE MIO MRS. TSUTSUI KOISHI MRS. YURIKO TSUTSUI ARIKI



EL NIDO PARK TORRANCE



TATSUO SHIOJI YUKIO TATSUMI KIYOSHI YAMAMOTO
KENJI YAMAMOTO



HARUO HAMAMOTO SHAKUHACHI



ICHIJI HASHIMOTO DR. FRED FUJIKAWA



YOGORE NO UTA

CHARLEY HAMASAKI TIGER IRIYE NOBORU MURAKAMI KOSHI SEKO
 TAKASHI YAMAMOTO YUKIO TATSUMI SABURO KURAMOTO
 back row, KIYOICHI NAKANISHI PETER SHIMADA



MASAAKI KUWABARA YASUO TATSUMI YUKIO TATSUMI
 MRS. NORI NAKAI SAKUICHI TAKADE



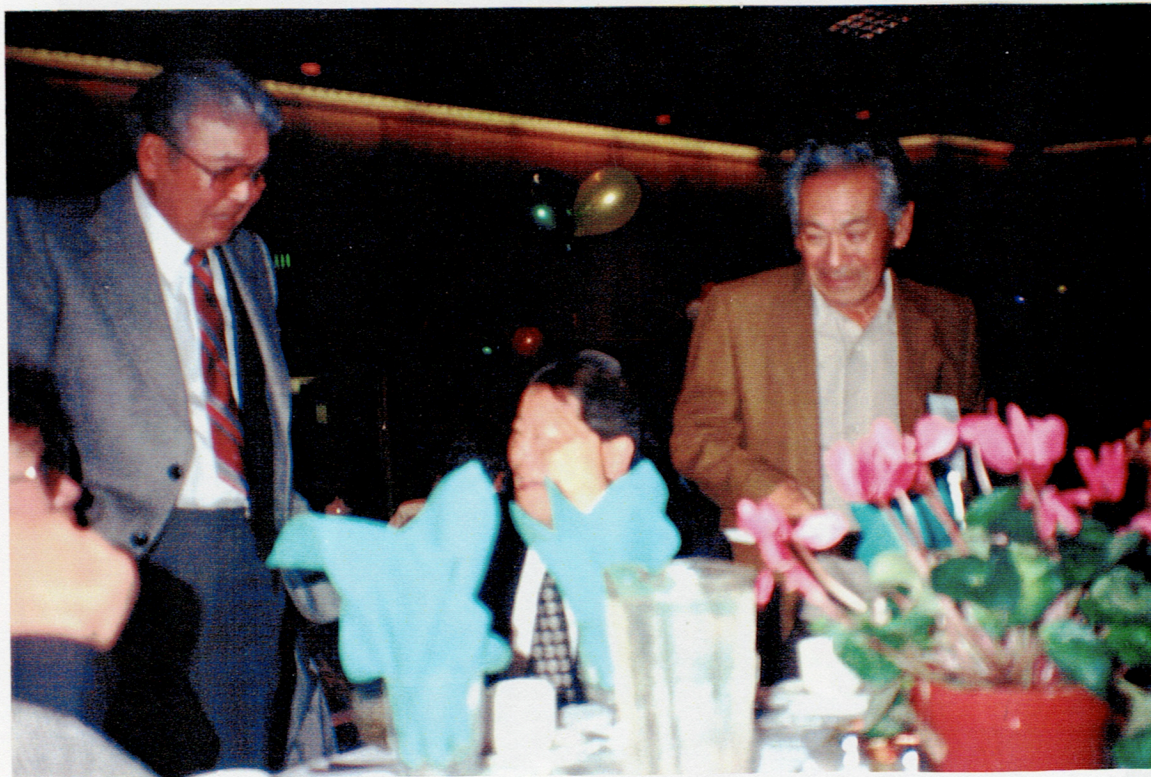
MOCHI MAKI



TAIKO



NAOJI TSUTSUI KENJI YAMAMOTO TOM OKIMOTO



BOB URAGAMI KATSUMI RYONO TAKASHI IRIYE



THE FUTURE TERMINAL ISLANDERS GULL PARK



1994 GULL PARK KIYOICHI NAKANISHI MOCHI MAKI



A TRADITIONAL JAPANESE FESTIVAL SCENE



1994 GULL PARK FRED SHIBUYA MISUKO RYONO SHIBUYA
KENJI YAMAMOTO KIYOICHI NAKANISHI BOB RYONO
HIDEO YAMAMOTO GEORGE MIO



ISLANDERS FISHING GULL PARK



1994 MRS. TOSHIRO IZUMI (KIYOKO) KİYOSHI
SAKIMOTO KENJI YAMAMOTO GULL PARK



1994 LAKEWOOD TAMOTSU KOBATA



1995 LAKEWOOD EMIKO HATASHITA MATSUTSUYU
GEORGE MATSUTSUYU KATSUMI RYONO

Kanpai to Terminal Island



YUJI KATSUMATA/Rafu Shimpo

Left to right, Terminal Islanders president Yukio Tatsumi, Yukizo Ryono, and Masaharu "Mas" Tanibata raise their glasses in a toast to the New Year at the group's *Shinnen Enkai* in Long Beach on Sunday. Former Terminal Island resident Ryono, 98, has been married for about 70 years.

THE TERMINAL ISLAND FISHING BOATS

VAN CAMP SEA FOOD 1915

ASIA NO 3

ASAZO OKA, ICHIMATSU NAKASUJI, JINTARO OHYE

FUTAMI

NAKAYAMA

RO SE

GORO TANAKA

KO RA RU

KANJIRO KOJIMA

AKASHI MARU

MATADAIYU SEKO, KAKUZO HAMAGUCHI

PANAMA

GONKICHI UCHIDA, TEIZO HAMAGUCHI, TARO FUJIOKA

SANSHIN

YOSHIHARU YAMAMOTO

ATLAS NO 3

TAMAZO TANI, YOSHIHEI IDO, RYOTARO HATA

MUSASHI

MUNEJIRO WAKICHI

WESTLAND

JINSHIRO TANI

TENYO

SAIJI RYONO

ASASHIO

WAICHI URA, TSURUMATSU TOMA, NAOICHI YUTANI, SUTEMATSU
YUTANI

SAZANAMI

U. TANAKA, SHIROBE KATSUYAMA

KIIKAWA DAI ICHI

MATSUJIRO TONAI, YOSHINOSUKE HATASHITA

KIYO T T NO 4

HARUTARO HATASHITA, ICHIMATSU OISHI, MASUKICHI RYONO

SUWA MARU

YAICHI HIGASHI, OTOMATSU KITA

ASIA NO 2

TORAKICHI MIZUMOTO, YASUKE NAGASAKI, KAMEKICHI MIZUMOTO

UBUYU MARU

RYOKICHI HASHIMOTO, RYOTARO TERADA

T H M O

FUJIMATSU OGURA, YAHACHI HIRAMATSU, GOROKICHI TABATA

MAIKO

KATSUKICHI HAYASHI, OTOMATSU HAYASHI, ASAJI NAKAHAMA

SUMA

IWAMATSU HOSONO, MUNEKICHI MIYAKAWA, SOTARO MIYAKAWA

HAPPY

MASAICHI HATASHITA, YASUJO MURANAKA, KATSUJIRO HORI

AKEBONO NO 2
 KAMEZO SEKO, SADAHYAKU NAKAJI
 LAGUNA
 TSURUMATSU TOMA, SAKUTARO HAMANO
 GENKAI MARU
 YAZO INOSAKA, NAKAYAMA
 TAIYO MARU
 SAICHI WAKICHI, ICHIRO HAMA, OTARO KAWABATA
 NIITAKA
 YOSHINOSUKE KAMEI, SUTENOSUKE KAMEI, ROKUNOSUKE MARUMOTO
 KIKUSUI
 MOTONOSUKE KURABASHI, TOMEMATSU DOI
 MONETA
 FUKUTARO MINAMI
 CHITOSE
 CHIYOMATSU RYONO
 SUCCESS
 SHIMIZU
 KIYO
 HONDA
 MONTEREY
 TOYOKICHI TANAKA, TSUNEJIRO KOTANI, SHIROSAKU NAKAJI
 KASUMI
 S. RYONO
 SISTER MARU
 TOKUMATSU YOSHIOKA, HATSUTARO ISHIGAKI
 PASSING
 FUSAKICHI AKASAKA, KANICHI NISHINO

 WHITE STAR CANNERY

 HARUNA
 YASUKICHI ENOMOTO
 WORLD
 JINSABURO SHIOJI, HEISUKE SHIOJI, JIROSAKU HASHIMOTO
 IKOMA
 SAKICHI HAMAI, TORIZO KOBATA, YASUMATSU TSUJI
 NIKKO
 ITO
 AZUMA
 HISANOSUKE TABATA
 CHIHAYA
 UKICHI KOBATA, KANEZAEMON KAMEI
 ISAMI MARU
 HARUMATSU YAMASAKI, KUMAKICHI TSUKAMOTO, SHIRO ASARI
 TAKAO
 SEIJIRO SHIROYAMA, SHIGESABURO TAKEUCHI

TOKYO DAI ICHI
 YOKICHI WAMOTO
 T T NO 4
 M SEKO
 MINAMI MARU
 ICHIHARU MINAMI, YOSHIMATSU YAMAMOTO, SHINZO MINAMI
 TAIJI
 TSUNEMATSU HIGASHI, OTOJIRO YAMASHITA
 HAYASHI
 TOKUMATSU HAYASHI, TAMEZO SAKA, SANBEI YUTANI
 TOGO
 CHOZO OTANI, HISATARO UYEJI, YAJIRO SHIOJI
 ALASKA
 YOSHIZO YAMANISHI, MANJIRO AOKI
 SATSUKI DAI ICHI
 KAMEGORO KAJI
 KOBATA
 YOSHIZO KOBATA, OTOMATSU OKU
 SUNBEAM
 ISOHEI HATASHITA, TOMEKICHI TANI, MOTOKICHI UYEDA
 YAMATO DAI SAN
 IWAMATSU OHSETO, YOSHIDA, K ISHIBASHI
 TACHIBANA
 TADATARO OKUDA
 SUCCESS DAI NI
 YOSHIKICHI HAMASHITA, HARUMATSU KIZU, YASUKICHI YAMASAKI
 NARUTO
 TAMEZO SAKA
 ANGEL
 KURAMOTO
 TOSHI MARU
 YOSHIHEI YAMASHITA, TOKUICHI KAWAMURA, USHIMATSU YAMASHITA
 SATSUKI NO 2
 WAHEIJI OGAWA
 T T DAI ICHI
 TOKUTARO TSUCHIYAMA

 AMBROSE FISH CANNERY

 KII GUMA
 MANKICHI ASARI, HEIKICHI YAMASHITA, GENTARO IWABASHI
 TANAMI
 TORAKICHI SAIKA, YOSHIMATSU IWASAKI, TOMOZO IWABASHI
 SUN
 TORAKICHI MIYAMOTO, RIKICHI KATAOKA, JYOTARO KOHIGASHI
 NIKO NIKO
 ZENMATSU MIO, JIIGORO NITTA, YAUEMON SHINTANI
 ASAMA DAI ICHI
 TETSUZO YABE

MASCOT DAI NI
 EIICHI MATSUMOTO
MIO MARU
 SHIGEMATSU OZAKI, TOKUMATSU MIO, KICHITARO MIO
SISTER
 ISHIGAKI, YOSHIOKA
PASSING
 AKASAKA
FUJI DAI NI
 U SHIOJI
MASCOT DAI ICHI
 EIICHI MATSUMOTO
ONTARIO
 T YAMADA
SHIGA MARU
 KOTA ISHIHARA
TIGER
 S KAJITA, ISHIHARA
NORTH AMERICAN CANNERY
SHIGA DAI NI
 KIYOHICHI HONJO, MATSUZO DEGUCHI
ASUKA
 KYODAIYU RYONO, DAIBE RYONO
YAMATO DAI NI
 TORANOSUKE SATO, TOKUTARO KAMEI
MINESADA
 KOTARO MORIMOTO, YOSHIMATSU YOSHIOKA, MAYEDA, MIWA
HOKUBEI
 ASAMATSU ONO, SHINICHI MAYEDA, JYOTARO KOHIGASHI
MY FLOWER
 YOSHIHEI SAIKA, GENGORO UYEDA, JINNO SUKE HIGASHI
YAMATO DAI ICHI
 DENTARO TANI, TOMEGORO SHIBA, TORAJIRO SHIBA
NANKA
 SADAJIRO SUMIDA, SHOTARO YAMAMOTO, MINOSUKE MINAMI
SUNRISE
 TOKUMATSU TAGAWA, YASUTARO MAKIGAWA
ASAMA DAI ICHI
 KAMEKICHI ASARI, SHIYUJIRO ASAI, SHIROKICHI NAMIKAWA
ASIA NO 2
 YASUJIRO YOTA, BUNTARO NAKANE, YOSHINOJYO YOTA
STAR
 NAOKICHI TSUTSUI, MANKICHI MURAKAMI
HINODE DAI ICHI
 HEISABURO HAMAGUCHI
HINODE DAI NI
 TOMEKICHI TAKEUCHI, YAGORO HAMAGUCHI

SUWA NO 2
 CHIYOMATSU RYONO
 HIDAKA
 GENNOSUKE YAMASHITA
 TOKIWA
 TAKESHIRO OKUJI, SUMIICHI TOMA
 INARI
 FUJIGORO HIRAGA, HARUTARO NAKANISHI
 ATLAS DAI ICHI
 SHINTARO KODA
 KITTY
 ISHIKAWA
 KIIKAWA
 SHIMADA

 COAST CANNERY

 R O DAI NI
 HARUMATSU WAKAKI, JUICHI NAKAMURA
 MIYE
 TAKEKICHI MUKAI
 R O DAI ICHI
 SEISUKE KANESHIMA, TORAICHI KANESHIMA, SEIICHI NONOSHITA,
 TSUNEMATSU ISHIGAKI

 E
 ENROKU OGAWA
 IZU
 KYONOJYO YAMASAKI, FUJISABURO WATANABE, KOKICHI WATANABE
 TONE
 TORAO TAKAHASHI, MISATO SHINDO
 TOKYO DAI NI
 K NAGAI

 LONG BEACH TUNA COMPANY

 ESUMI
 IWAMATSU YAMAMOTO
 T K T DAI NI
 OTOZO TAKEUCHI, HIKOKICHI TAKEUCHI
 KUMANO DAI NI
 NISUKE SEKO, KIKUJIRO IRIYE, TOKUNOJYO IWABASHI

 S H
 SOKICHI HIRAGA
 KUMANO DAI ICHI
 SUTENOSUKE KAMEMOTO, HEITARO KAMEI
 TEIKOKU
 TAHEI HAMASAKI, ENTARO HATA
 KUMANO DAI NI
 YOZO KISHISHITA, ROKUMATSU FUJITA, KATSUTARO TAGUCHI

TEIKOKU
TAHEI HAMASAKI, ENTARO HATA
KUMANO DAI NI
YOZO KISHISHITA, ROKUMATSU FUJITA, KATSUTARO TAGUCHI
AKEBONO DAI ICHI
SUMIJIRO KAMEI
T S H
SAIJIRO HORIGUCHI
SHIMA
KIKUJIRO IDA, TANOSUKE OKUMURA
MY MAID
KENICHIRO MATSUKI
T H T DAI ICHI
MANKICHI HIRAGA, MASUJIRO IKEDA
SHINGU DAI NI
MATSUZO KINOSHITA
AMERICA
GENICHI KIMURA, MASAICHI SHIBATA
SPORT
T OKUNO, KUMAKICHI TANINO
KINGFISHER
TAROICHI IWATANI, JITARO FUNAGOSHI, OTOMATSU TASHIRO
JINJA
KAWABORI
SOUTH COAST CO.
IZUMO
HANDAIYU RYONO, HICHIMATSU TAKESHITA
TOYO
TSUNEZO YURA, KUMATARO YURA, KOTARO YURA
SADO
TORIZO YAMANISHI
FUJI
UTARO SHIOJI, ISABURO SHIOJI, YOSHITARO TANI, YOSHIZO NISHI
PACIFIC
HIKOTARO SARAЕ
SANO
HICHIZO MIKI, SHIROKICHI TANIGUCHI, ROKUHEI TABATA
OKUMA
O OZAWA
HALFHILL CO.
H T P DAI ROKU
ASANOSUKE NABEWARI
CITY OF SEIKYO
NAOSHIN OHBASHI

H T P DAI SHI
WATANABE
H T P DAI ICHI
K O OZAWA
H T P DAI NI
S IWASAKI
H T P DAI SAN
MATSUMURA

STAFFORD COMPANY

ATLAS DAI NI
M MIYA
TOKAI
S ISHIKAWA
FUJIYAMA
K YAMASAKI
ESSENCE
SHIN SHIBATA

GOLDEN STATE CANNERY

KYO SE
S MAKINO, T ASANUMA
ISE
TAKAOKA

LOS ANGELES TUNA

HIGO
KOMATSU KAZE, NAKANO
ITA
S NAKAGAWA
SAZANAMI
S SUGIMOTO

AS OF 1936

MARICO
TORAO TAKAHASHI
CIPANGO
IICHIRO ONO
COLUMBUS
KYOO YAMASHITA, JYOTARO KOHIGASHI
PANAMA
OZAWA, ISHII, SHINFUJI, ITO, NISHINO
SAN LUCAS
DENTARO TANI, TOMOICHI NAGATA

CHICAGO
 KICHIHACHI SHIROYAMA
 GENEVA
 YOSHITARO MATSUNO
 PATRIOTIC
 CHIYOMATSU RYONO
 UBUYU MARU
 RYOKICHI HASHIMOTO
 LINDE
 KINSAKU YAMASAKI, TADAKICHI KUSABA
 NEW MONTEREY
 KOICHIRO SHIBATA, SHIBATA, INOUYE
 WHITE ROSE
 SHIGEMATSU ISHIKAWA
 LINA B
 KATSUSUKE HAMACHI
 CITY OF SAUSALITO
 YATARO HORI
 AVALON
 KAWASHIRI
 3 STAR
 SHINTARO NAKAGAWA
 NEW EXAMPLE
 G KOISHI
 CONGRESS
 TOMOHEI SHIONO
 CLEOPATRA
 SUTENOSUKE KAMEI, TOMITARO MARUMOTO
 COSTA RICA
 MASUHEI NAKAI
 DAIHO
 ISABURO HORI
 GOLDEN GATE
 FUJII
 SAN JOAQUIN
 KAMEZO SEKO
 HARVARD
 YAMAMOTO
 RICHNESS
 SHIROKAWA
 SILVER GATE
 T TOMA, D RYONO, W URA
 SUCCESS
 BENNOUKE HARA, JYOKICHI HAMASHITA
 STANDARD II
 JINSHIRO TANI

SWEET NO II
SANZO OKA
WESTMACO
MATSUKICHI MIYAGISHIMA
KAMINE
YOSHIMATSU HASE
HUMANITY
HEISAKU INABA
NANCY HANKS
YOHEI SUZUKI, SUZUKI,
YOSHIICHI TSUCHIYAMA
FRANCES
KAWAGUCHI
LIBERTY GIRL
MATSUNO
CRISIS
MIYAGISHIMA
NEW WORLD
HENRY MURAKAMI
ORION
GEORGE FUKUZAKI
SILVER WAVE
KANEZO MURATA
ADVANCE
KAWASHIMA
STANFORD
YOSHIDA
SENIORITA
ISHIGAKI
YUKON
SEITARO OKAMOTO
AMAZON
IWATA
EMBLEM
TOYOZAKI
STAR
HAMAGUCHI
OHIO NO II
TOMITARO MARUMOTO
ALOHA
DAIKICHI OKUNO
ASIA DAI SHI
BUNTARO NAKANE
LABEL
SHINTARO NAKAGAWA
MIHO
HIKOICHI KADONAGA
RYONO
GORO YAMASAKI,
YOMOKICHI WATANABE

RICHMOND
S SHINTANI
SEACO DAI NI
HEISABURO HAMAGUCHI
SANTOS
KANESHIMA BROS
ITO
MITSUO ENDO
FAIRYLAND
FUKUJIRO HAMAGUCHI
OWL
KINOSHITA
HOOVER
KINOSHITA
KYO DAI NI
HATASHITA
MIYAKO
RYOHEI MIYAMOTO
SUNBEAM NO II
ISOHEI HATASHITA
NARUTO
TAMEZO SAKA
URANUS
MAYEDA
SEIYO
T HIGASHI
DIXIE
YOSHIMATSU HAMAGUCHI
H O
HIROJI OKUMURA
M O
MATAJIRO OKAYAMA
MAIDEN
OTOMATSU KIMURA
N S
NAKAEMON SHINTANI
P H
NAMISHIRO KAINO
K M
MUI
SUMIE
YAGORO HAMAGUCHI
S Y
Y SHIMADA
T J
TAZO JOE
U B
KIKUJIRO HAMAGUCHI
WABUKA
BUNJI HIRAMI



TERMINAL ISLANDERS
25TH ANNIVERSARY

PUT TOGETHER BY THE TEAM

YUKIO TATSUMI
TOSHIRO IZUMI
MASAHARU TANIBATA
KISAYE N. SATO
KENJI YAMAMOTO
TATSUO SHIOJI
BOB RYONO